

# Disney's Beauty and the Beast the Musical

Visual Story – Easy Read



The Walt Disney Company



I am going to see Disney's Beauty and the Beast the Musical at the Adelaide Festival Theatre.

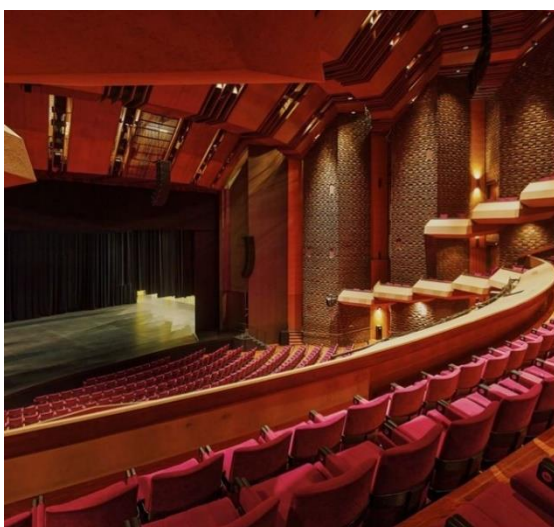
The show runs for about 2.5 hours.

The first half (Act 1) goes for about 1 hour and 20 minutes. In the middle, there will be a break for 20 minutes. The second half (Act 2) goes for about 50 minutes.



In the musical, there are lots of different things I see may and hear.

For example, the music is performed by a live orchestra that sits in front of the stage. Sometimes the music will be loud.





During the performance there will be stage effects like pretend smoke and fog, gunshot flashes, pretend fighting and strobe lighting. For more information about this, I can read the full visual story via the Accessibly and Inclusion page on the Beauty and the Beast website.



I can bring along sensory tools that might help me like sunglasses, ear plugs, headphones or a drink bottle. I can also take a break in the quiet spaces if I need to. If I am bringing a bag, it needs to be no bigger that the size of a A4 piece of paper.



During the relaxed performance, there are some changes to the show to help people feel comfortable to enjoy the show. Some things that are different are:

- People can make sounds, move around, fidget or use noise cancelling headphones, I can do this too
- Extra support staff onsite to provide extra support
- Quiet spaces available in Gallery 2 and JB Room
- Warning bell chimes replaced with signs and prompts from staff
- Some adjustments to sound and lighting have been made to accommodate sensory sensitivities
- A pre-warning light system will be used to help me prepare for sounds and lighting that cannot be change
- A preshow welcome will take place to introduce the volume of the orchestra, some of the characters and some of the sensory effects in the show



To get to the Adelaide Festival Theatre, I might catch public transport (bus or train) or drive in a car. For more information about getting there, I can look at the 'Your Visit' page of the Beauty and the Beast the Musical website.

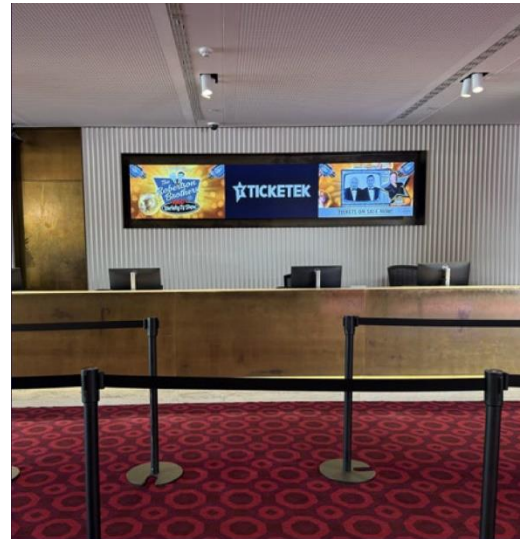


If I want to arrive early, the doors into the foyer will open about 1 hour before the start of the performance. It is good to arrive at least 15 minutes before the performance begins to make sure I have enough time to get to my seat.





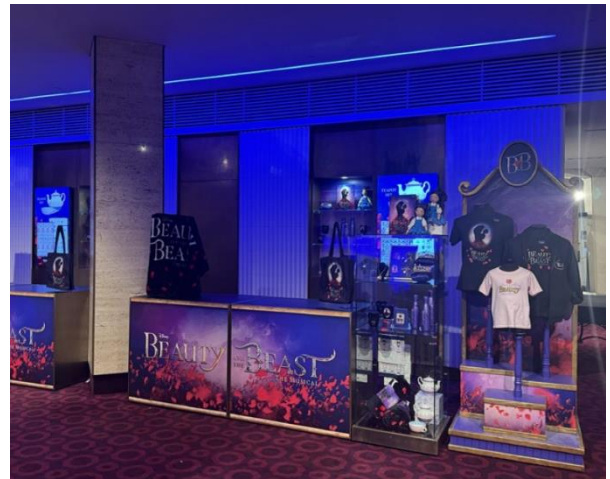
When I get to the theatre, there are multiple entrances, I can enter through any door. If I need to pick up tickets, I can collect them from the box office.



If I need help, I can look for a volunteer or staff member. They are wearing t-shirts like these. There will be staff and volunteers from Disney, Adelaide Festival Theatre, Aspect and Autism SA.



While I wait for the show to start or during the break (intermission), I might take photos with the rose wall, get a drink or snack or look at the merchandise stall.



At the end of the show, all of the actors will come back onto stage and bow. Usually during this time, the people in the audience might stand up, clap or cheer. I can do this too if I want to.

